

Vivacity  
SPORTLINE

TECHNICAL NETWORK LEADERSHIP

50 cc CDI

## Datasheet

Reference : 754753

### GENERAL CHARACTERISTICS :

#### SPECIFICATIONS :

Company name : Vivacity 50 cc

Mines type \*\*: S1C variant A

(\*\* official French body responsible for regulating weights and measures and changes made to motor vehicles)

#### DIMENSIONS (in mm) :

Length : 1817

Width : 697

Height (without rear-view mirrors) : 1143

Ground clearance : 145

Wheel base : 1249

#### WEIGHT (in kg) :

Laden weight : 88

#### STEERING :

Steering column mounted with ball-bearing cone and cup.

#### CAPACITIES (in litres) and RECOMMENDATIONS :

Fuel tank (including reserve) : 6 : super unleaded petrol (95 or 98) only.

Oil sump : 1,3 : semi synthetic or synthetic for two-stroke engines with separate oiling. Complies with API TC or JASO FC standards.

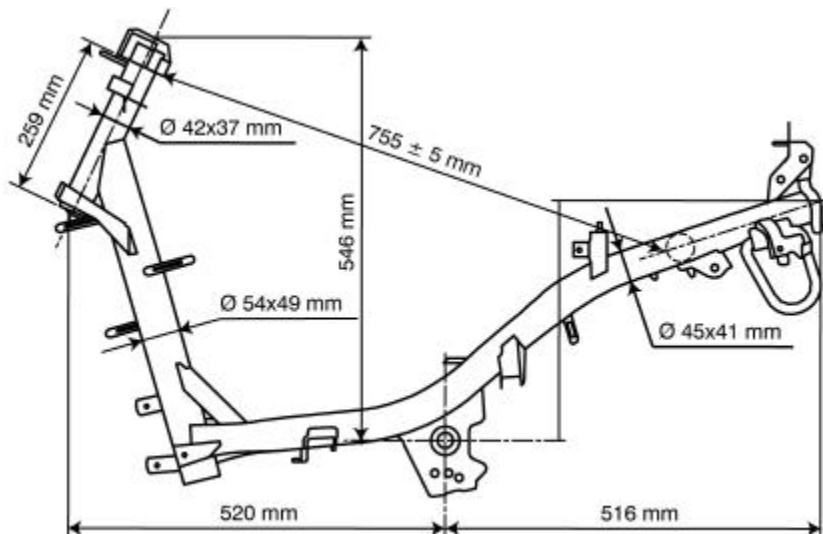
Crankcase : \*

Cooling system : \*

Relay box : 0,12. SAE 80W90

Fork : \*

Braking circuit : DOT 3 or DOT 4



\* : Not completed

#### LUBRICATION :

Separate lubrication by piston pump, either variable delivery synchronised with the throttle grip, or constant delivery (depending on model). Driven by hobbled pinion on the right shank of the crankshaft. The oil is injected directly into the carburettor.

#### COOLING :

By air circulation forced by a turbine fixed on the rotor of the flywheel magneto.

#### ENGINE :

2 stroke single-cylinder.

Direct intake via reed valve into the crankcase.

Scavenging by 5 transfers.

Cylinder capacity : 49,1 cm<sup>3</sup>

Bore 1 shore : 40 x 39,1

Max power : 3,5 kW

Max power rating : 7000 to 7200 rpm

Max torque rating : 6600 to 6900 rpm

#### TRANSMISSION :

By 2 variable pulleys and V-type belt. 6-roller type drive pulley mounted on the left shank of the crankshaft. Fixed flange of the pulley equipped with cooling fins to cool the belt.

Driven/centrifugal 3-block lined clutch pulley mounted on the end of the relay box input shaft.

#### RELAY BOX :

By shaft and pinions. Double set of pinions.

- 1<sup>st</sup> gear teeth set : helical.
- 2<sup>nd</sup> gear teeth set : straight.

#### SUSPENSION :

Front suspension type : reverse telescopic fork.

Travel : 73 mm

Rear suspension type : combined hydraulic spring-shock absorber.

Travel : 68 mm

#### FRONT BRAKE :

Single disc type, hydraulic control.

Diameter of the brake piston : 30 mm

Disc diameter and thickness : 190 – 3,5 mm

Min thickness : 3 mm

Diameter of the master-cylinder : 11 mm

#### REAR BRAKE :

Single cam drum type controlled by cable.

Brake drum diameter : 110 mm

Brake lining thickness : 4 mm

#### WHEELS AND TYRES :

Integral aluminium wheels and tubeless tyres.

	Front	Rear
Rim dimensions :	3" x 12"	3,5" x 12"
Tyres dimensions :	120/70 - 12	130/70 - 12
Pressures (bar) :	1,3	1,6
Maxi wheel disc :	0,8 mm	0,8 mm
Balance :	*	*

### TIGHTENING TORQUES (Nm) :

#### ENGINE :

Cylinder head : 12 to 15

Exhaust mounting on the cylinder : 15 to 18

Crankcase : 8 to 12

Spark plug : 20

#### CYCLE PART :

Engine mounting on connecting rod : 57 to 70

Front wheel : 60 to 70

Upper nut on the steering column : 70 to 80

Rear wheel : 100 to 120

Shock-absorber mounting rear, upper : 43 to 50

Inner : 20 to 25

Front brake calliper : 25 to 35

Front brake disc : 27 to 32

### ADJUSTMENTS AND CHECKS :

#### CYLINDER / PISTON :

Ring gap clearance.

Upper : 0,2 to 0,35 mm

Lower : 0,2 to 0,35 mm

#### CONNECTING ROD / CRANKSHAFT :

Crankshaft run-out : 0,12 mm

#### CARBURATION :

Carburettor.

Make : type : GURTNER PA

Adjustment n° : 370

Main jet : 72

Idle jet : 42

Needle (type and adjustment step) : L 3035H first notch

Starter jet : 45

Mixture screw : 1 rev 1/8

Idle adjustment : 1600 rpm  $\pm$  100

CO<sup>2</sup> % adjustment : \*

IGNITION :

- Ignition unit : CDI
- Spark plug : NGK BR7HS or EYQUEM R850
- Electrode gap : 0,6 to 0,7 mm
- Ignition advance : variable
- Ignition coil : TEC MP11 or T11C X7A
- Primary winding resistance : 0,26Ω ± 20 %
- Secondary winding resistance : 3 kΩ ± 20 %
- Spark plug cap resistance : 5 kΩ ± 10 %
- Pick-up resistance : 120Ω ± 10 %

ELECTRICAL EQUIPMENT :

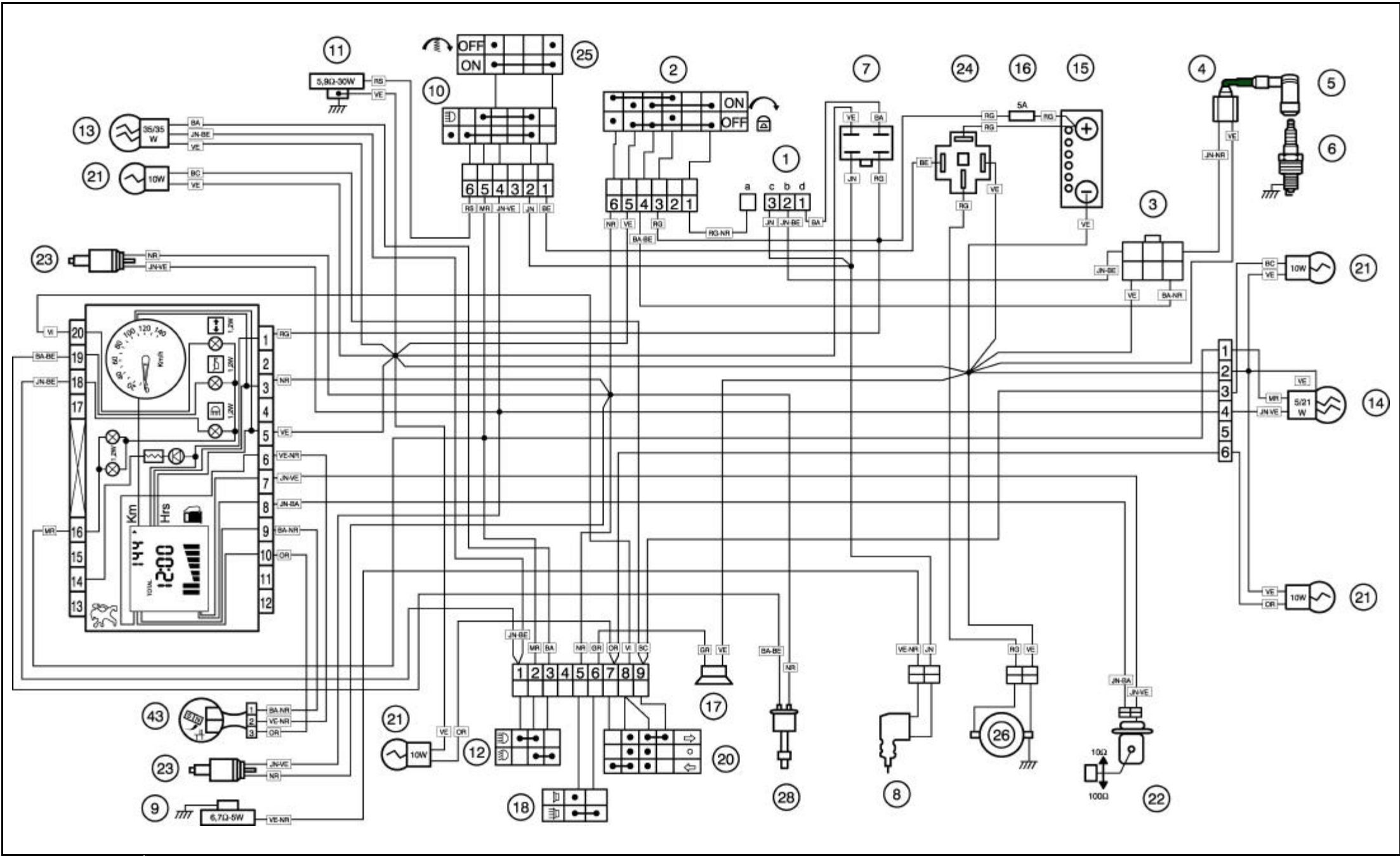
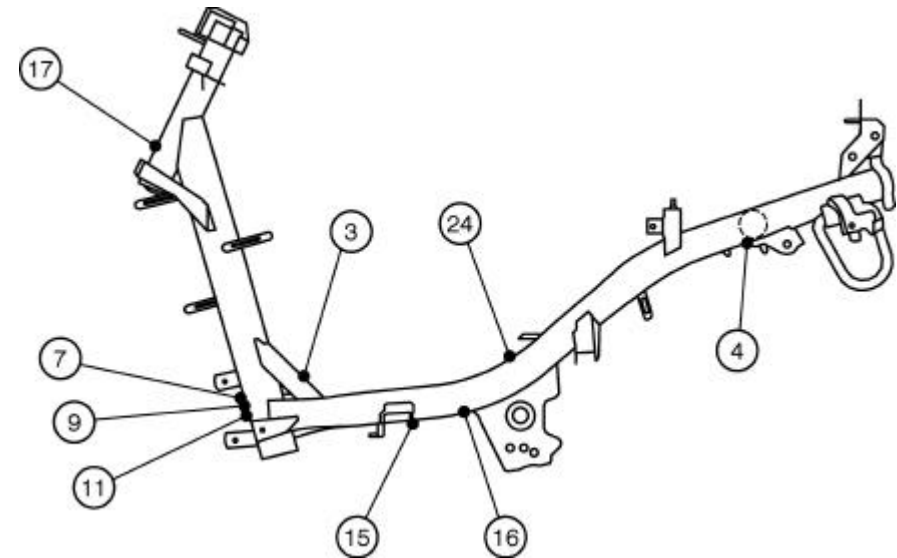
- Current generator (type and power) : GF4 – 276 – 55W
- Make : MITSUBA
- Stator resistance : yellow wire 0,6Ω ± 25 % - white wire 0,7Ω ± 25 %
- Battery regulation voltage : 14,5 ± 0,5V
- Battery (type and capacity) : YB4 LB 12V 4Ah
- Lighting voltage : alternating current regulation at : 13,1 ± 0,5V

STARTER :

- Power and type : 150W SM10254
- Make : MITSUBA

LIGHTING AND FUSES :

	Quantité	Puissance
Headlamp (code light) :	1	12V - 35/35W
Rear stop lamp :	1	12V - 21/5W
Indicator lamps :	4	12V - 10W
Number plate lightning :	*	*
Dash board lighting :	2	12V - 1,2W
Instrument panel indicator lamps :	3	12V - 1,2W
Main fuse :	1	5A
Signalling fuse :	*	*
"Side light" bulb :	*	*



- A Instrument panel lightning
- B Main beam control
- C Oil level warning light
- D Indicator control light
- E Fuel gauge
- F LED "Anti theft device"
- G Temperature gauge
- H Warning light "reserve"
- J Oil pressure warning light

- 1) Generator
  - a : Ignition coil (inner)
  - b : Pickup
  - c : Alternating current
  - d : Battery charge current
- 2) Ignition switch
- 3) CDI unit
- 4) Ignition coil (high voltage)
- 5) Spark plug socket (resistive) 5 kΩ
- 6) Spark plug (resistive) 5 kΩ

- 7) Regulator, rectifier
  - (A) : Regulator AC
  - (B) : (Regulator) rectifier DC
- 8) Automatic choke
- 9) Resistor (in line with choke) 6,7Ω – 5W
- 10) Light switch
- 11) Resistor (parallel to lightning) 5,9Ω – 30W
- 12) Dip switch (main/low headlight)
- 13) Headlight
- 14) Stop /tail light
- 15) Battery
- 16) Fuse
- 17) Horn
- 18) Horn switch
- 19) Indicator relay
- 20) Indicator switch
- 21) Indicator bulb
- 22) Fuel gauge pickup

- 23) Stop light switch
- 24) Starter relay
- 25) Starter switch
- 26) Starter motor
- 28) Oil level switch
- 29) Temperature sensor
- 30) Immobilizer
- 31) Antenna for anti-theft device
- 32) "Side light" bulb
- 33) Number plate light
- 35) Emergency switch (ignition)
- 36) "Neutral" switch (gearbox)
- 37) Oil pressure switch
- 39) Thermo-switch cooling fan
- 40) Electrical carburettor heating
- 41) Power supply unit
- 42) Switch "Reserve"
- 43) Speed sensor
- 44) Saddle actuator

- BA : White
- BA-BE : White/Blue
- BA-NR : White/Black
- BC : Light blue
- BE : Blue
- GR : Grey
- JN : Yellow
- JN-BA : Yellow/White
- JN-BE : Yellow/Blue
- JN-NR : Yellow/Black
- JN-VE : Yellow/Green
- MR : Brown
- NR : Black
- OR : Orange
- RG : Red
- RG-NR : Red/Black
- RS : Pink
- VE : Green
- VE-NR : Green/Black
- VI : Purple